

ATA Study Unit News



American Topical Association

Volume 2, Issue 1

American Topical Association National Topical Stamp Show 2015 & Study Unit Literature Competition

NTSS 2015 in Portland, Oregon is quickly approaching and I hope that all of the study units plan to participate in the show. Please try to mention the show in your journals and encourage your members to attend.

Study units that plan on having meeting at the show and would like meeting space should contact ATA Secretary Laurie Ryan, 4134 Wenbrook Dr, Cincinnati, OH 45241-2963 or via email at doxiemom7@gmail.com.

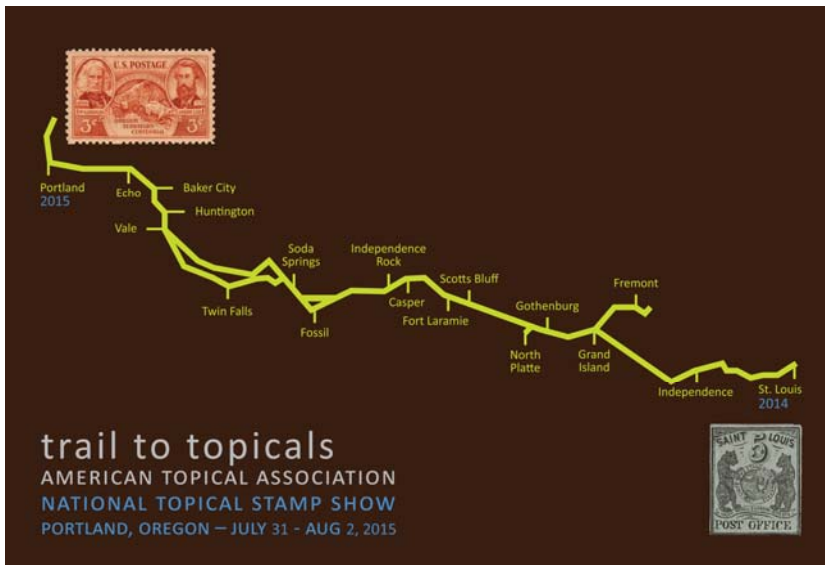
The ATA is happy to announce that there will be a 2015 literary competition for the study units. The judging criteria is currently being revamped for this year's competition. Study units must

submit four issues of their journal published between May 2014-April 2015 along with payment for the entry fee.

The entry fee is \$10 if you do not wish to have the journals returned to your study unit or \$20 if you do wish to have the journals returned to you. Journals that are not returned will be used by ambassadors at shows to help promote your study unit. You may also include applications for your study unit and they will be placed with your journals when on display at NTSS 2015. Please contact Jeff Hayward(see page 2) for the prospectus and application if your study unit would like to participate in the competition.

Inside this issue:

ATA NTSS 2015 & Study Unit Literature Competition	1
World Stamp Show NY 2016 Superbooth	2



American Topical Association

Jeffrey Hayward
ATA Study Unit News Editor
ATA Study Unit Coordinator
PO Box 60180
Staten Island, NY 10306-0180
Phone: 718-701-2447
Email: stamps@jeffhayward.com

ATA Office:
American Topical Association
Vera Felts Executive Director
PO Box 8
Carterville, IL 62918-0008
Phone: 618-985-5100
Email: americantopical@msn.com

Boldly To The Future!



The purpose of ATA Study Unit News is to encourage ATA study units to share news and ideas with each other. Please send your comments, questions or any news items you have to the ATA Study Unit Newsletter editor.

World Stamp Show NY 2016 Superbooth

There is still room for study units to share part of the ATA Superbooth at the World Stamp Show NY 2016. Study units will have space for their journals in the superbooth and will be required to help with staffing the superbooth during the show.

Full details about the ATA superbooth and the show are available in the ATA Study Unit News Summer 2014 edition. The newsletter can be



downloaded here — <https://www.dropbox.com/s/vqa061o0sxo3o2u/ATA%20Study%20Unit%20News%20V1I1%20Summer%202014.pdf?dl=0>

The newsletter is also available via email or postal mail. Please contact Jeff Hayward.