



**THE AMERICAN TOPICAL ASSOCIATION**

**CELEBRATES THE 150TH ANNIVERSARY  
OF THE  
PONY EXPRESS  
AT**

**NATIONAL TOPICAL STAMP SHOW  
JUNE 25-27, 2010  
DENVER, COLORADO**

 **SOUVENIR PROGRAM** 

## 2010 Vancouver Olympics Philatelic Souvenirs



Fig. 1 Torchbearers



Fig. 2 U.S.A. Delegation



Fig. 3 Apolo Ohno



Fig. 4 Shen Xue/Hongbo Shao



Fig. 5 Lindsay Vonn



Fig. 6 Shaun White



Fig. 7 Sydney Crosby



Fig. 8 Martin Brodeur



Fig. 9 Shani Davis

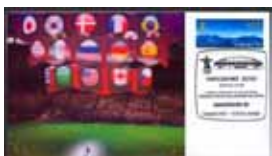


Fig. 10 Closing Ceremonies

The covers illustrated above (descriptions below) are only available in our e-Bay (**wonderful-world-of-stamps**) store along with hundreds of similar covers honoring Canadian, Chinese, USA and other athletes of the 2010 Vancouver Olympic Games. Also available are covers showing all Team Delegations as they enter the stadium at the Opening Ceremonies, and much more. Very limited quantities of all items.



- Fig. 1 Five torchbearers Light the Olympic Cauldron - Opening Ceremonies. . . . \$7
- Fig. 2 USA Delegation enters the stadium . . . . . \$5
- Fig. 3 Apolo Ohno (USA) Gold Medal in Speed Skating . . . . . \$5
- Fig. 4 Shen Xue/Hongbo Shao (China) Gold Medal in Figure Skating . . . . . \$7
- Fig. 5 Lindsay Vonn (USA) Gold Medal in Alpine Skiing . . . . . \$7
- Fig. 6 Shaun White (USA) Gold Medal in Snowboard Half Pipe . . . . . \$5
- Fig. 7 Sydney Crosby (Pittsburgh Penguins) Gold Medal Hockey (Team Canada). \$5
- Fig. 8 Martin Brodeur (New Jersey Devils) Gold Medal Hockey (Team Canada).. \$5
- Fig. 9 Shani Davis (USA) Gold Medal in Speed Skating . . . . . \$5
- Fig. 10 Part of Closing Ceremonies . . . . . \$5

**Wonderful World of Stamps**  
**PO Box 55 – St Martin**  
**Laval, Quebec, Canada H7V 3P4**  
**Tel: 450-687-0632 Fax: 450-687-3143**  
**www.topicalsetc.com email: info@topicalsetc.com**

## WELCOME TO ATA'S NATIONAL TOPICAL STAMP SHOW!

We've been preparing for you.  
We've been looking forward to welcoming you.  
We've been waiting for you!

The dealers have been waiting for you to support them.  
The exhibits have been waiting for you to admire them.  
The meetings have been waiting for you to attend them.  
The meals have been waiting for you to eat them.  
The tours have been waiting for you to take them.

And now you're here! I hope this show is all you expected – and more.

Purchase that much-sought after item.

Widen your philatelic horizons.

Get a new exhibiting idea.

Make some new philatelic friends.

Discover more about the ATA.

Have that accumulation appraised.

Put a face on the name "Rocky Mountain Philatelic Library."

Meet the new editor of *Topical Time*.

Above all, enjoy the show!

Jack André Denys,  
ATA President



## TABLE OF CONTENTS

President's Welcome .....	1
Schedule of Events .....	2
Transcontinental Mail 1848–1861 .....	5
Exhibits .....	8
Floor Plan .....	11
NTSS 2010 Dealers - The Best of the Best .....	12
Checklist of Pony Express Stamps .....	13
Program Patron Donors .....	13
Awards .....	14
Jury .....	15
Colorado - A Few Philatelic Notes .....	18
Buck the Trend Fund .....	23
ATA Officers 2008–2010 .....	24
NTSS 2010 Show Committee .....	24



Cover - *The Pony Express* (1924) by Frank Tenney Johnson (1874–1939)  
Watercolor on paper.



## NTSS 2010 SCHEDULE OF EVENTS



### FRIDAY, JUNE 25TH

10:00 a.m.	Show opens	Halls A&B
10:00 a.m. - 6:00 p.m.	What's in Your Attic	Show floor
1:00 p.m.	ATA Business Meeting	Aspen Theater
6:00 p.m.	Show closes	
6:15 p.m.	Bus leaves for RMPL (ticket required)	Hotel Lobby
7:00 p.m. - 9:00 p.m.	President's Reception (ticket required)	RMPL
9:45 p.m.	Bus returns from reception	Hotel lobby

### SATURDAY, JUNE 26TH

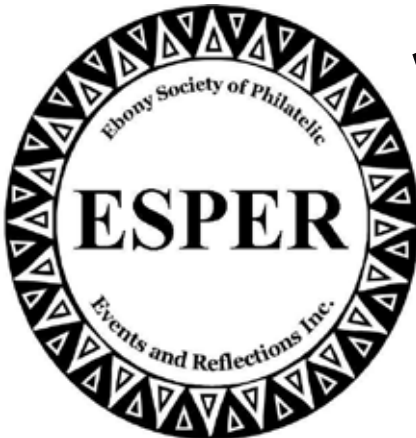
10:00 a.m.	Show opens	Halls A&B
10 a.m. - 6 p.m.	What's in Your Attic	Show floor
10:00 a.m.	Ships on Stamps Study Unit	Aspen Theater
10:00 a.m.	Biology Study Unit	Copper Mtn.
11:00 a.m.	Lepidopterists Study Unit	Copper Mtn.
12 noon	Tour of Exhibits	Frame 1
1:00 p.m.	Space Study Unit	Aspen Theater
2:00 p.m.	Lighthouse Stamp Society	Aspen Theater
3:00 - 5:00 p.m.	Penguins on Stamps Study Unit	Copper Mtn.
3:00 p.m.	Wine/Graphics Study Units	Room 620
3:00 p.m.	AAPE Exhibiting Seminar	Aspen Theater
4:00 p.m.	Judges Critique	Aspen Theater
6:00 p.m.	Show closes	
6:30 - 7:00 p.m.	No Host Reception	Vail
7:00 - 9:30 p.m.	Awards Banquet (ticket required)	Vail
9:30 - 10:00 p.m.	Exhibits (open for banquet attendees)	Halls A&B

**SUNDAY, JUNE 27TH**

8:30 a.m.	Study Unit Officers and Editors Breakfast	Aspen Theater
10:00 a.m.	Show opens	Halls A&B
10 a.m. - 3:00 p.m.	What's in Your Attic	Show floor
11:00 a.m.	Meet our new editor	Aspen Theater
1:00 p.m.	Women Exhibitors (WE): Open Forum	Aspen Theater
2:00 p.m.	Open Forum: The ATA in 2020	Aspen Theater
3:00 p.m.	Show closes	

**MONDAY, JUNE 28TH**

7:30 a.m.	Show evaluation meeting	Restaurant
9:00 a.m. - 5:00 p.m.	All Day Tour (ticket required)	



Visit us at [www.esperstamps.org](http://www.esperstamps.org)



APS Affiliate #239    ATA Study Group    AFDCS Chapter #91



ESPER is an international organization whose members have a common interest in promoting and collecting the people and history of the African diaspora on philatelic material. For information contact: [gerez211@aol.com](mailto:gerez211@aol.com) or

ESPER Membership Committee  
 P O Box 605100  
 Bayside, NY 11360



# ATA

**Making Stamp Collecting Fun!**

**Since 1949, ATA has enriched the lives of collectors like you.**



## **ATA Multimedia Program New DVDs in 2010**



**Collecting the Presidents  
My Eclectic Collection  
Firemen on Stamps  
Integrating the U.S. Navy  
Stamps on Stamps**



**Take a DVD back to your local club or to a collector friend!**

**Thanks for coming to NTSS!**

**AMERICAN TOPICAL ASSOCIATION**

**PO Box 8**

**CARTERVILLE IL 62918-1618**

**618-985-5100 Fax 618-985-5131**

**[americantopical@msn.com](mailto:americantopical@msn.com) [www.americantopicalassn.org](http://www.americantopicalassn.org)**

## TRANSCONTINENTAL MAIL 1848–1861

The Treaty of Guadalupe-Hidalgo at the conclusion of the Mexican-American War was signed on February 2, 1848, ceding to the United States the area of California along with much of what is now Arizona, Nevada and New Mexico. With the discovery of gold on February 24, 1848, by John Marshall at Sutter's Mill in California, this remote part of United States territory gained over 300,000 new residents within two years. The new Californians came from communities where frequent mail delivery was common and they wanted the same in their new home.



United States 1994  
(Scott 2869t)

Until the completion of the transcontinental railroad in 1869, the delivery of mail through the West to California was a long and arduous process. Mail moving west went primarily by ship to Panama, overland across the Isthmus of Panama and then by ship to San Francisco. The trip was reversed for mail traveling east. Southern and central overland routes, by either mules or stagecoaches, were also used, but much less frequently. By sea or by land, mail took months to reach its destination and the need for faster communication between California and the eastern states soon became more pressing.

The competition between the two overland routes was intense. The Central Overland mail route carried mail by river steamer from San Francisco to Sacramento where it was placed on a mule train and carried to Placerville and then Salt Lake City. Although dangerous the route gained importance with the discovery in 1858 of large silver deposits (Comstock Lode) in Utah Territory (now Nevada) and gold (Pike's Peak Gold Rush in Kansas Territory (now Colorado). Over 100,00 immigrants arrived in the area leading to a marked increase in the amount of mail. The eastern half of the central route traveled from Salt Lake City to Independence, Missouri.

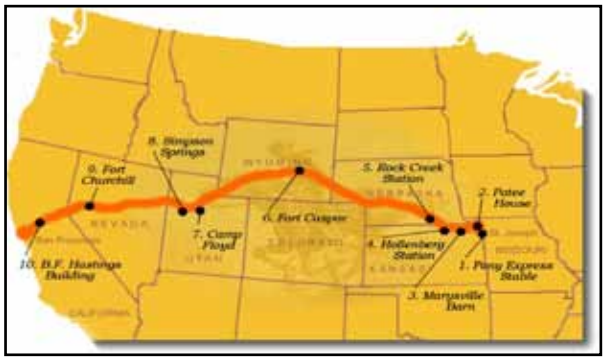
The other overland route started in St. Louis, Missouri, traveling through Arkansas, Oklahoma and Texas to San Diego and then to San Francisco. Called the Butterfield Overland Route or Oxbow Route, it was established in 1857 by John Butterfield (1801-1885), founder of the American Express Company.

When mail did arrive at the San Francisco post office, either by steamer or overland, mail clerks distributed it, often to long lines of residents. As the swelling population began receiving more and more mail, it wasn't long before the number of arriving letters far outpaced the ability of the post office clerks to distribute them. In addition, there was still no regular way to get mail to those miners and others who couldn't get to San Francisco. The result was a huge amount of dead letter mail. Although this problem was partially alleviated

as more post offices were established in California, getting mail to the remote mining camps remained a problem.

However, in 1849, Alexander H. Todd, a former gold miner, was sworn in as a postal clerk at San Francisco and began delivering mail with a mule

to the mining camps. His success was soon copied by others and “express companies” often consisting of a single rider and a mule or horse began springing up throughout the gold fields. Thus, before anyone ever thought of using horses to carry the mail across the plains from Missouri to California, these “Pony Express” riders were delivering the mail to the numerous mining camps in California.



### The Birth of the Pony Express

In 1854 on a horseback trip from San Francisco to Washington, DC, over the central overland route, William M. Gwin (1805-1885), a physician and senator from California had as his companion for part of the trip, Benjamin F. Ficklin (1827–1871), General Superintendent for Russell, Majors and Waddell, a large freighting company. Ficklin gave the idea of a rapid express service

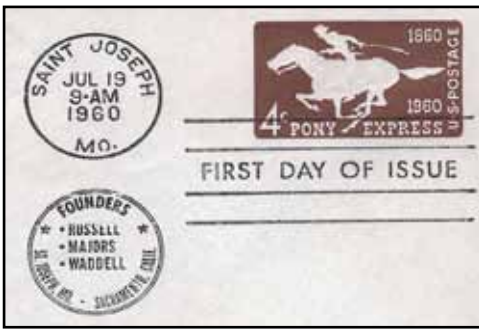


80<sup>th</sup> Anniversary Pony Express. United States 1940 (Scott 894)



100<sup>th</sup> Anniversary Pony Express. United States 1960 (Scott 1154)

using relay riders to Gwin who in January 1855, introduced a bill in Congress to establish such a service. Although the bill died in committee, Gwin was able to convince William H. Russell (1812–1872), the feasibility of the idea. Russell and his partners organized the Central Overland California and Pike’s Peak Express Company and on January 27, 1860, Russell announced that he would launch the Pony Express on April 3, 1860. In the two months between Russell’s announcement and the April 3<sup>rd</sup> launch date, Benjamin Ficklin oversaw the building and manning of 190 relay stations over a distance of 1,966 miles. On April 3, 1860 when riders left simultaneously from St. Joseph, Missouri, and San Francisco, California (by river steamer to Sacramento), the Pony Express was born.



100<sup>th</sup> Anniversary Pony Express. United States 1960 (*Scott U543*)

Using the Central Overland Route, the Pony Express relay stations were initially placed twenty-five miles apart. Each rider was expected to cover three stations for a distance of seventy-five miles, but it was soon determined that the horses could not keep up the top speed for twenty-five miles. Intermediate stations were then established, with some distances between stations as close as ten miles. Four hundred to

five hundred horses and eighty riders were required to cover the nearly 2000 miles from St. Joseph, Missouri, to Sacramento, California. The service also needed station keepers, superintendents, supply wagons and stock tenders. In the beginning the schedule was set at ten days for the trip across country, but was subsequently decreased to eight days requiring an average speed of ten miles per hour.

With the completion of the telegraph on October 24, 1861, the Pony Express era came to an end and on November 20, 1861, the last Pony Express rider delivered his *mochila* (knapsack) in San Francisco. The service was never financially viable and in the end bankrupted William Russell who eventually turned to selling patent medicines in New York City.

### The Pony Express in Colorado

The present town of Julesburg, Colorado, is located at the extreme northeastern part of Colorado and when the Pony Express began was part of Nebraska Territory. Previously known as Old Julesburg, it lies at a ford on the South Platte River and where the Central Overland, California & Pike's Peak Express Company established a stage station. It was named for Jules Reni, a French-Canadian, who had settled there and who was considered its first citizen and who the company appointed station keeper.

At Old Julesburg miners going to the gold camps near Pike's Peak continued up the South Platte Valley toward Denver, while overland mail and Oregon Trail travelers followed Lodgepole Creek north and west toward Fort Laramie. Pony Express riders left mail destined for Denver at Old Julesburg, the only Pony Express station in what is now Colorado.



Pony Express monument at Old Julesburg

**COMPETITIVE EXHIBITS**

- 1 – 7** *Life of Jan Christian Smuts: Soldier, Statesman & Scientist* by Dr. Edwin J. Andrews of Pennsylvania. The exhibit depicts the events, times, places and people who influenced the life and exploits of Jan Christian Smuts, 1870-1950.
- 8 - 10** *Exploring the Evolution of Plants from Phytoplankton to Orchids* by Christopher Dahle of Iowa. The exhibit explores the rise of plants and examines their evolution over the milenia.
- 11 - 20** *The Donkey in Man's World* by Robert J. Mather of Wisconsin. This exhibit is designed to acquaint you with the donkey and highlights its place in the world and its relationship with man.
- 21 - 27** *Coconuts* by Phillip J. Stager of Florida. A study of the coconut palm (*Cocos nucifera*) and its relations to man and the environment.
- 28 - 30** *The Travels of Alexander von Humboldt* by Lyman R. Caswell of Washington. The exhibit shows a philatelic biography of the naturalist and explorer, Alexander von Humboldt.
- 31 – 35** *Building Roads – Then and Now* by Alexander R. Borges of Illinois. The exhibit shows the development of road building from the first primitive trails to the motorways of today.
- 36 – 40** *Building a Nation ... One State at a Time* by Adam Mangold of New Jersey. The exhibit illustrates how each State came into the Union and the story behind it.
- 41 – 46** *“Horsing Around”* by Robert Henak of Wisconsin. A topical exhibit (with thematic elements) of non-equine “horses”.
- 47 - 50** *The Development of the American Submarine 1900-1924* by David A. Kent of Connecticut. A study of the evolution of early American submarines as depicted on picture postcards.
- 51 - 57** *The History of the Louisiana Purchase 1492-1904* by Joseph F. Frasch, Jr. of Ohio. The story of the Louisiana Purchase from its first explorations to the purchase by the United States in 1803.
- 58 - 60** *The Game of Soccer* by Trevor Dean Thomas of Colorado. The exhibit tells the history of soccer, the way the game is played and the various competitions.
- 61 - 68** *The Magical World of Harry Potter* by Van Siegling of Ohio. Do you believe in Philatelic Magic? See where J.K. Rowling got her inspiration for names. Wands at the ready!

- 69 - 70** *The Real Ugly Duckling – Hans Christian Andersen* by Karen Cartier of Texas. The exhibit outlines the life and stories of Hans Christian Andersen.
- 71 - 78** *Ludwig van Beethoven – His Life in a Historical Context & His Legacy* by Yukio Onuma of Japan. The exhibit describes Beethoven's life, his posthumous episodes and quotations, together with major influences on following generations.
- 79** *J is for Javelin* by Elizabeth Hisey of Florida. This exhibit with philatelic & collateral material is designed to show the participation of the javelin in the Summer Olympics.
- 80** *Pineapples* by Phillip J. Stager of Florida. A study of the pineapple (*Ananas comosus*) and its relation to man and the environment.
- 81 - 85** *Games of the X Olympiad, Los Angeles – 1932* by Conrad Klinkner of California. The exhibits covers the period from the initial effort to obtain the 1932 Olympics and ends with the closing ceremonies of a record setting games.
- 86** *Spoiled by War: the Games of the XII Olympiad* by Andrew Urushima of Callifornia. The story of the XII Olympiad which were not celebrated due to war.
- 87** *José Rizal – 1860-1896* by Dionisio Taea of California. The exhibit tells the story of José Rizal, noted scientist, philosopher, sculptor, educator, historian and Filipino hero.
- 88 - 89** *The U.S. Space Shuttle Program Vehicles* by Dillon Dale Thomas of Colorado. The exhibit discusses the seven vehicles used in the U.S. Space Shuttle Program.
- 90** *Jules Verne – a Trip to the Moon* by Jack H. Green of Wisconsin. A philatelic Picture of Verne's Book *From the Earth to the Moon*.
- 91** *Icarus and Daedalus* by Jack H. Green of Wisconsin. A philatelic story of a father and son. Father knows best and lives – the son behaves otherwise!
- 92** *Black Beauty & Friends* by Austin John Hines.
- 105-110** *"Microcosmos": The World of Insects* by Alan J. Hanks of Canada. Insects are the most successful group in the animal kingdom and this exhibit is designed as an introduction to that world.
- 111-115** *Voyages Extraordinaire* by Dalene Thomas of Colorado. This exhibit tells the story of the novels of Jules Verne by air, land and sea.
- 116-120** *Warbirds of Air Force Plant #4: Ft. Worth, Texas* by Ray E. Cartier of Texas. A history of aircraft from the B-24 to the F-35, built in Fort Worth, and the various roles these planes have filled.

**121-128** *"Give My Regards to Broadway"* by Jeff Shapiro of New York. The story of Broadway told thematically by means of postcards.

### INVITED YOUTH EXHIBITS

**93-94** *Journeys in Space* by Tanmay Shah

**95-96** *Christopher Columbus* by Matthew Nagle

**97-98** *The Story of Zimbabwe* by Brylee Lutman

**99-100** *The Beautiful Outdoors* by Charmaine Badenhorst

**101** *The United Kingdom of Great Britain* by Lucas Birdsall

**102** *Tanzania* by Lucas Birdsall

**103** *Famous People* by Sai Komorogiri

**104** *Flowers* by Sindhu Komorogiri.

### NON-COMPETITIVE

**105** *Ships on Stamps* – An Invitation.

### ATA "STEPPING STONES" YOUTH EXHIBITS

"Stepping Stone" exhibits are 4 and 8 page exhibits offering young collectors an opportunity to share their philatelic material non-competitively with emphasis on encouragement of future topical collecting and exhibiting. Located in the youth area there are six exhibits totaling 40 pages.



## *The Medical Subjects Unit*

For collectors of any aspect of medicine and medical history  
Red Cross, Pharmacy & Medicinal plants, Diseases, Nobel Prize Winners, Physi-  
cians, Nurses, Scientists, Anti-smoking, Medical specialties, etc.

Our journal, *Scalpel & Tongs*, *The American Journal of Medical Philately*  
is published quarterly in full color.

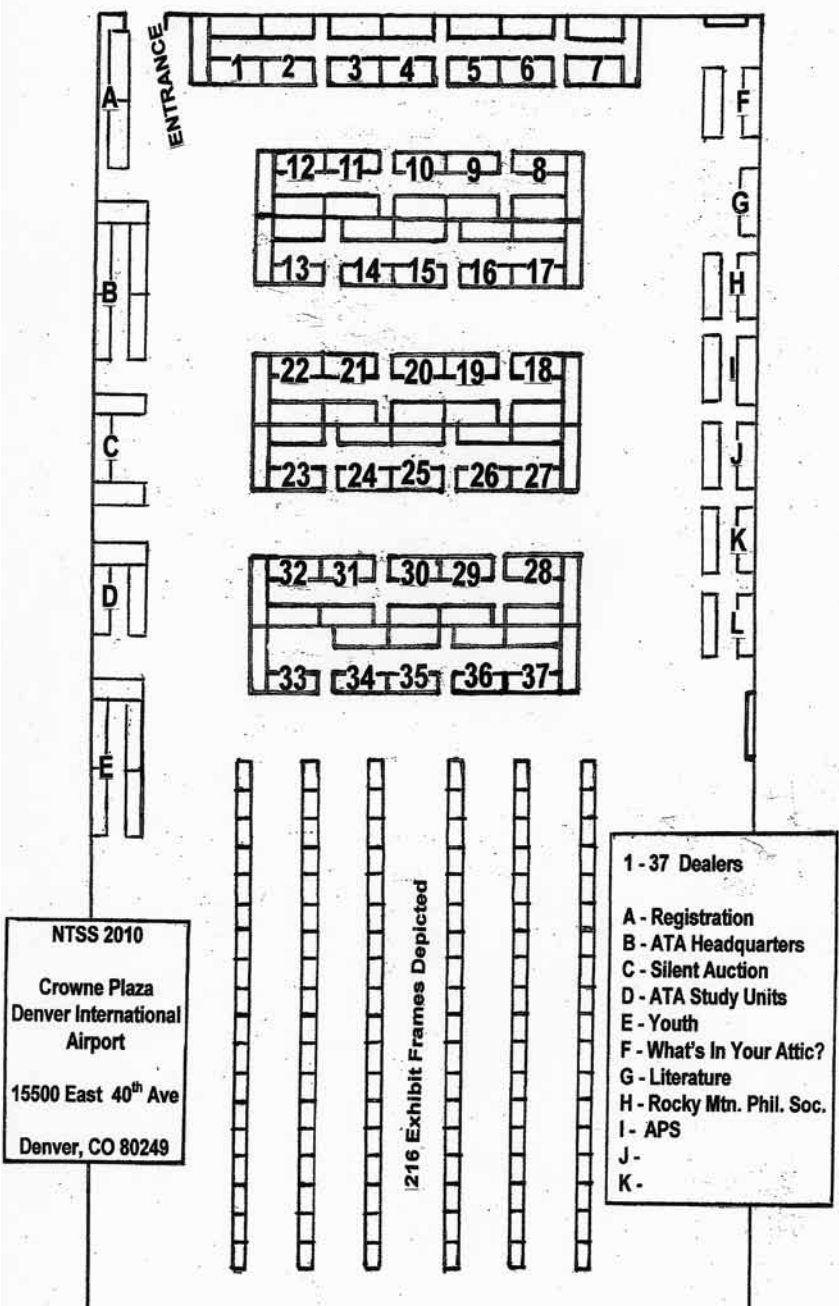


Dues: \$15.00/year (US residents)  
\$18.00/year (others)

Contact: Frederick C. Skvara, MD,  
PO Box 6228,  
Bridgewater, NJ 08807

Email: [fcskvara@optonline.net](mailto:fcskvara@optonline.net)





Floor Plan of NTSS'10  
 Conference Rooms A & B



<b>Dealer</b>	<b>Booth</b>
<b>A to Z Stamps</b> 4950 E. Thomas Road Phoenix, AZ 85018	<b>10-11</b>
<b>Carlton Stamps</b> P.O. Box 721 Indian Hills, CO 80454	<b>28</b>
<b>Coast Philatelics</b> 1113-D Baker Street Costa Mesa, CA 92626	<b>18</b>
<b>D.K. Enterprises</b> 9960 Silverdale Way NW #11, Silverdale, WA 98383	<b>1</b>
<b>Ed Dimmick</b> 785/E2 Oak Grove Road #110 Concord, CA 94518	<b>21</b>
<b>D &amp; P Stamps</b> 2220 Otay Lakes Rd. Suite 502-411 Chula Vista, CA 91915	<b>33</b>
<b>Fairwinds</b> P.O. Box 862 Siletz, OR 97380	<b>23</b>
<b>France International</b> P.O. Box 580 Gibsonia, PA 15044	<b>13</b>
<b>Gutter Pairs, Etc.</b> P.O. Box 20305 Carson City, NV 89721	<b>37</b>

<b>Dealer</b>	<b>Booth</b>
<b>Hall's Philatelics</b> P.O. Box 2295 Kirkland, WA 98083-2295	<b>5-6</b>
<b>Hunt &amp; Company</b> 10711 Burnet Road, Ste. 314 Austin, TX 78758-4460	<b>15-16</b>
<b>Interphilia</b> P.O. Box 27894 Lakewood, CO 80227	<b>14</b>
<b>Joe's Stamps</b> 2524 W. Dale Street Colorado Springs, CO 80904	<b>9</b>
<b>Keimar Stamps</b> P.O. Box 2677 Garden Grove, CA 92842	<b>3-4</b>
<b>Klein Collectibles</b> P.O. Box 6471 Bellevue, WA 98008	<b>2</b>
<b>K &amp; R Enterprises</b> PO. Box 744 Thompson Falls, MT 59873-0744	<b>7</b>
<b>Jim Leer</b> 2047 Bird Street Oroville, CA 95965	<b>22</b>

Dealer	Booth
<b>Liberty Stamps for Collectors</b> 6541 Crystal Boulevard El Dorado, CA 95623-4862	<b>19-20</b>
<b>Queen City Coins &amp; Stamps</b> P.O. Box 141 La Fayette, GA 30728	<b>32</b>
<b>Sak's Coins &amp; Stamps</b> 3537 N. Carefree Circle Colorado Springs, CO 80917	<b>25-26</b>
<b>Robert M. Szazama</b> P.O. Box 663 Marion, IL 62959	<b>8</b>
<b>Jamie Schwartz</b> 1512 Fountain Drive Lawrence, KS 66047	<b>27</b>
<b>Smyth's Stamp Shoppe</b> 507 Vilas St. Onalaska, WI 54650	<b>29-30</b>
<b>Stamp Center of Texas</b> 39350 IH-10 West #5 Boerne, TX 78006	<b>12</b>
<b>Stamp Matters, Inc.</b> P.O. Box 1818 Broomfield, CO 80038-1818	<b>31</b>
<b>Stamp Smith</b> 1212 NE 96th Terrace Kansas City, MO 64155	<b>17</b>

Dealer	Booth
<b>Webster Stickney</b> 7590 Windlawn Way Parker, CO 80134	<b>24</b>

Checklist of Pony Express Stamps		
Country	Year	Scott No.
Antigua	1985	892
Antigua	1989	1240
Dominica	1989	1205c
Grenada	1979	927
Grenada	1980	989B
Grenadines	1997	1923a
Guyana	1990	2269h
Lesotho	1989	740e
Liberia	1974	668
Liberia	1979	843
Seychelles	1976	373
USA(locals)	1861-64	143L1-9
See pp. 5-7 for other USA stamps		

Program Patron Donors for NTSS 2010
Karen & Ray Cartier
Jack Congrove
Lucy Eyster
Vera Felts
George Griffenhagen/Dottie Smith
Bruce Johnson
David A. Kent
Robert J. Mather
Myron Molnau
Yukio Onuma
Lawrence J. Pacl
Bob & Pat Quintero
David A. Kent
Frederick C. Skvara
Wayne Youngblood

## AWARDS AVAILABLE FOR NTSS 2010



Grand Award



Best Display Class Award



Youth Grand Award

### NTSS Awards

#### *NTSS 2010 Grand Award*

A brass sculpture of a Pony Express rider mounted on a wood base along with a clock.

#### *NTSS 2010 Reserve Grand Award*

A brass sculpture of a Pony Express rider mounted on a wood base.

#### *One Frame Grand Award*

A wood wall plaque with a brass plate showing a Pony Express rider.

#### *Best Display Class Award*

A wood wall plaque with a brass plate showing a Pony Express rider.

#### *NTSS Youth Grand Award*

A small Pony Express rider mounted on a wood base.

#### *ATA Chapter 5 Incentive Award*

Presented by the Milwaukee chapter of the ATA, this award is given to a silver, silver-bronze or bronze exhibitor whose exhibit is deemed to have the most potential. Single or multiple frame exhibits are eligible.

#### *Military Postal History Society Best of Show Award*

Best exhibit related to military history. Any single or multi-frame exhibit that achieves at least silver is eligible when two or more exhibits are entered with this topic. The award is a plaque.

#### *NSDA Most Popular Award*

Presented by the National Stamp Dealers Association to the exhibit that receives the greatest number of votes from the general public. The award is a wood plaque with a brass plate etched with a Colorado mountain scene.

#### *Multiple frame and Display Class*

ATA Gold, Vermeil, Silver, Silver–Bronze and Bronze

#### *One frame Class*

ATA Gold, Vermeil, Silver, Silver–Bronze and Bronze

#### *Youth Class*

ATA Gold, Silver and Bronze

## National Society Awards

*AAPE Creativity Award,*

*AAPE Research Award,*

*AAPE Novice Award*

*AAPE Youth Award*

*APS Research Award*

*American Philatelic Congress Award*

*WE Sterling Achievement Award*

## ATA Study Unit Awards

*Americana Unit Award*

*Archaeological (Old World) Unit Award*

*Biology Unit Award*

*Casey Jones Railroad Unit Award*

*Collectors of Religion on Stamps Award*

*Europa Study Unit Robin Crowley Memorial Award*

*Lighthouse Stamp Society Award*

*Medical Subjects Unit Award*

*Philatelic Lepidopterists Award*

*Ships on Stamps Unit Award*

*Space Unit Award*

*Sports Philatelists International Award*



## 2010 National Topical Stamp Show Jury

David W. McNamee - Florida (Chief Judge)

Douglas N. Clark - Massachusetts

Thomas M. Fortunato - New York

Alfredo Frohlich - Florida

Anthony S. Wawrukiewicz - Oregon



Over 50 Years of Service

To Philately  
WWW.americanaunit.org



# Motor City

## Stamp and Cover Club

Serving the Greater Detroit Area

ATA Chapter 95

Meets Last Sunday Each Month

[www.motorcitystampandcover.com](http://www.motorcitystampandcover.com)

248-546-0038

## THE COROS CHRONICLE COMPLETE CD SET



The *COROS Chronicle* from January 1, 1945, Vol. 1 No. 1, through May 2009, No. 352, on a set of four compact discs is available now. A wealth of information and research at your fingertips. All prices include postage.

**Members:** Domestic (\$28.95); International (\$39.00)

**Non-members:** Domestic (\$38.95); International (\$49.00)

Remittances - U.S. funds or World Money Orders drawn on a U.S. bank.

Send checks (payable to COROS) to:

**Mrs. Verna Shackleton, 425 Linwood Ave. #110, Appleton, WI 54914**

**Email: [corosec@sbcglobal.net](mailto:corosec@sbcglobal.net)**

## Hall's Philatelics

Jim Hall

PO Box 2295

Kirkland, WA 98083-2295

Phone: 425-822-3227

Email: [hstamps1@verizon.net](mailto:hstamps1@verizon.net)



Stock includes stamps from most areas of the world with emphasis in Scandinavia; U.S.; Canada/Newfoundland; British Commonwealth; Great Britain; Europe and Topicals. Several binders of used topical/countries. I routinely obtain new issues for selected countries and topics. Stop by and say HI!!

[Booth 5-6]



AMERICAN SOCIETY  
OF  
POLAR PHILATELISTS



If you collect stamps or postal history of the Polar Regions, you are invited to join ASPP. Some of the topics in this fascinating area include polar flights, Antarctic scientific research stations, Alaska, polar exploration, Operation Deep Freeze,



TAAE, Falkland Islands, Tristan da Cunha, Greenland, Russian Arctic, Gough Island, Heard Island, Spitzbergen and many other subjects.

Other areas are penguins, polar bears, polar event covers/cachets/cancels, Australia and New Zealand Antarctic research, and the many research stations established in Antarctica by countries around the world.

The American Society of Polar Philatelists was founded over 50 years ago and has members around the globe. Members can buy and sell Polar materials using the ASPP mail auctions. Conventions are held at major APS shows with exhibits and seminars.

To receive a flyer about ASPP and a membership application, send an email to [alanwar@comcast.net](mailto:alanwar@comcast.net), or write to ASPP, Box 39, Exton PA 19341-0039 USA. If you would like a sample copy of our quarterly journal *Ice Cap News*, enclose \$3.

And be sure to visit us on the web at [www.polarphilatelists.org](http://www.polarphilatelists.org).



## COLORADO - A FEW PHILATELIC NOTES

Mesa Verde National Park, established in 1906, lies in the Four Corners area of southwestern Colorado and encompasses 52,073 acres. The name is from the Spanish for “green table”. The original inhabitants, called Basketweavers, arrived at Mesa Verde at least 2000 years ago and are the ancestors of the pueblo builders that lived in the cliff dwellings. Most of these dwellings were built from AD 750 to AD 1300 when they were abandoned because the region experienced a severe and prolonged drought. Depicted on the stamp is the Cliff Palace, a dwelling of over 150 rooms that housed at least 100 individuals.



United States 1934  
(Scott 743)



United States 1951  
(Scott 1001)

The stamp issued for the 75th Anniversary of Statehood depicts the state capital at Denver, the state seal, a columbine, a sculpture by Alexander Phimister Proctor (1862–1950) entitled *The Bronco Buster* and the Mount of the Holy Cross. Located about 100 miles west of Denver in the Sawatch Range, the Mount of the Holy Cross is 14,000 feet high and has two crossing, steep, narrow gullies (couloirs) on its east face. When filled with snow it appears as a cross. Colorado was officially established as a territory on February 28, 1861, from parts of the territories of Kansas, Nebraska, New Mexico and Utah. It was admitted as the 38<sup>th</sup> state on August 1, 1876.



The state bird of Colorado is the Lark Bunting (*Calamospiza melancorys* Stejneger), a migrant that arrives in April by the hundreds and inhabits the plains and prairies where there is an abundance of seeds and insects. Colorado schoolchildren chose it as the state bird and the legislature made it official on April 29, 1931.

Adopted as the state flower on April 4, 1899, the white and lavender Rocky Mountain Columbine (*Aquilegia caerulea*) was discovered in 1820 on Pike’s Peak. It is a lovely flower with a rich aroma that attracts bees, hummingbirds and butterflies to its nectar. Columbines grow wild in many places with a wide variation in colors, but a number of cultivars can be found in gardens.



United States 1982  
(Scott 1958)

The Rocky Mountain Bighorn Sheep (*Ovis canadensis*), named for its massive, curling horns was designated the Colorado state animal in 1961. They are found only in the Rocky Mountains usually above timberline. The massive horns, which can weigh up to thirty pounds and grow up to fifty inches are not shed annually like the antlers of deer and elk.



United States 1972 (Scott 1467)



United States 1989  
(Scott 2424)

While many states have dinosaurs as state fossils, Colorado is one of only six states with an official state dinosaur — *Stegosaurus* — designated in 1982 by executive order of Governor Richard D. Lamm. Living in Colorado during the Mesozoic era in the Jurassic period 150 million years ago, this herbivore weighed about ten tons, but with a brain weighing only two to three ounces. A complete skeleton, one of only six in the United States, is in the Museum of Natural History in Denver.



# STAMP SMITH

## ALL TOPICAL

Stamps, Covers

Plate Blocks

Souvenir Sheets

Postcards

Mention Topical Time

for 10% off!

Come see us at

**Booth #17**

## Recently Acquired Topical Collections of

Medical

Marine Life

Flowers

Butterflies

Cats

Birds

Space

And More

1212 NE 96th Terrace, K.C., MO 64155

Email: [smidale@umkc.edu](mailto:smidale@umkc.edu) 816-734-4536

# THE CARTOPHILATELIC SOCIETY



## Collectors of Maps on Stamps



[www.mapsonstamps.com](http://www.mapsonstamps.com)



Sponsors: Omaha Philatelic Society

**METROPOLITAN**  
COMMUNITY COLLEGE



# OMAHA STAMP SHOW 2010

**Centennial of the Boy Scouts of America**

American Philatelic Society

Saturday, September 11 10:00 am - 5:00 pm

Sunday, September 12 10:00 am - 3:00 pm

Metropolitan Community College  
South Campus  
2909 Gomez Ave  
Omaha, Nebraska 68107

Free parking and admission  
Free evaluation of collections

New dealers, Post Office, and Boy Scouts of America merit badge

Topical Railroad Exhibit Award  
sponsored by  
Union Pacific Railroad



# SCOUTING

Additional information and Prospectus at [OmahaPhilatelicSociety.org](http://OmahaPhilatelicSociety.org),  
[EHicks@CFOsystemsLLC.com](mailto:EHicks@CFOsystemsLLC.com)

2010

Be a part of the excitement in 2010. Join  
**SPORTS PHILATELISTS INTERNATIONAL**  
for only \$15!

Instant Website Access To

4 FULL COLOR issues

4 BIG auctions

Monographs

[www.sportstamps.org](http://www.sportstamps.org)



[www.frankestamps.com](http://www.frankestamps.com)

**Worldwide Topical Website**

*Topical selections available as:*

Singles • Full Sets • Setenant Blocks or Strips • Souvenir Sheets • Imperfs  
Proofs • Essays • Cinderellas • Packet Collections

**Website Features**

Over 100 Different Topics listed & 9,000 topical items shown fully illustrated

Search by topic, scott number or country

Check to see the Latest Stamp Additions!

*Franke  
Stamps*

PO Box 322

Talent, Oregon 97540

email: [franke@frankestamps.com](mailto:franke@frankestamps.com)

Phone: 1-541-535-1994

Since 1981 APS ATA



**Free Shipping with all website stamp orders.**



## BUCK THE TREND FUND



Members of the ATA have been quite generous again this year. Almost 300 members contributed more than \$42,000 to the Buck the Trend Fund. They have demonstrated faith in the ATA to buck the trend of the dwindling membership and decreasing services of many other philatelic organizations. These gifts are enabling the ATA to increase member support and to make *Topical Time* more of a full-color must-read for thematic collectors.

The following donors were able to contribute \$100 or more. We thank them for including the ATA in their charitable giving and are pleased to recognize them in this way.

### *Founder's Circle (\$5000+)*

Catherine Fechner

Jerry Husak

### *President's Circle (\$1000+)*

David A. Kent

### *Diamond Level (\$500+)*

Jacob Cohen

Robert Lamb

Frederick C. Skvara

Vera Felts

Robert J. Mather

### *Gold Level (\$100+)*

ATA Milwaukee Chapter #5

Bruce Johnson

Rex Bates

Kris Lindstrom

Robert Boos

Harry Marshall

Susan Bruce

Mask Study Unit

Christopher Conlon

Ted Pappucciyan

Charles Cordrey

Laurie Ryan

Carter Craigie

Robert Sazama

Dennis Dengel

Ronald Sumner

Jack Denys

Dalene Thomas

Sandra Diggins

Toyoki Toriyama

Lucy Eyster

Orlando Trier

Dr. John Greve

Clarence Wagner Jr.

George Griffenhagen

Westminster Stamp Gallery

Carolyn Grund

(Donald Palazzo)

James Hall

Susan Whitehead

David Heckman

Elizabeth Wolf

# AMERICAN TOPICAL ASSOCIATION

## ATA OFFICERS 2008 – 2010

President	Jack Andre Denys
First Vice President	Dalene Thomas
Second Vice President	Dennis M. Dengel
Secretary	Laurie J. Ryan
Treasurer	Dorothy C. Smith
Directors:	
Douglas N. Clark	David A. Kent
Catherine Fechner	Robert E. Lamb
George B. Griffenhagen	Robert J. Mather
Alan J. Hanks	Frederick C. Skvara

## NTSS 2010 SHOW COMMITTEE

Show Manager	Robert J. Mather
Advance Registration	MaryAnn Bowman
Awards	Dalene Thomas
Awards Banquet	Dorothy C. Smith
Awards Banquet Program	Robert J. Mather
Banquet Master of Ceremonies	Jack Andre Denys
Bourse	Robert J. Mather
Cachets & Cancels	Robert J. Mather
Cachet Printing	Frederick C. Skvara
Catered Events (Food Services)	Dorothy C. Smith
Chapters Coordinator	Frederick C. Skvara
Distinguished Topical Philatelist Selection	Donald W. Smith
Exhibits	Alan J. Hanks
Exhibits Acceptance (Mail In)	Ronald Hill
Exhibits On Site Mount & Dismount	Alan J. Hanks
Floor Plan & Show Operations	Robert J. Mather
Hospitality	Dennis M. Dengel
Judges	Alan J. Hanks
Palmares	David A. Kent
Publicity	Ray Cartier
Room Scheduling, Room Set-up, Audio Visual	Dalene Thomas
Security	Robert J. Mather
Seminars	George Griffenhagen
Show Program Design & Printing	Frederick C. Skvara
Show Registration (On Site) Coordinator	Karen Cartier
Show Sales	Vera Felts
Show Site Selection	George B. Griffenhagen
Silent Auction	Dennis M. Dengel
Tours	Robert J. Mather
Units	Dalene Thomas
Volunteers	Karen Cartier
Youth Activities	MaryAnn Bowman



Our 320+ members in many countries believe that worldwide stamp collecting is the most fun and challenging area of philately today. Whether you are a beginner, casual collector, topical collector or specialist, ISWSC membership will benefit you. Members receive *The Circuit*, our regular newsletter. We operate exchange and sales circuits as well as an auction for members. Corresponding and trading with others of your collecting level and interests is another benefit of membership.

Stamp collecting is for everyone and the ISWSC supports a worldwide youth outreach effort. Stamp donations from members are made available to youth groups around the globe to encourage young and beginning collectors to discover this great hobby.



Annual dues - \$15 (about 4¢ a day); \$12 if under 18 years of age.

Apply on our website ([www.iswsc.org](http://www.iswsc.org))  
or send a postcard for an application.

International Society of Worldwide Stamp Collectors  
PO Box 19006  
Sacramento, CA 95006-0006  
[ExecutiveDirector@iswsc.org](mailto:ExecutiveDirector@iswsc.org)  
[www.iswsc.org](http://www.iswsc.org)

# MILWAUKEE, WISCONSIN

INVITES YOU TO RETURN TO  
THE BIRTHPLACE OF THE

## ATA



## NATIONAL TOPICAL STAMP SHOW 2011



**JUNE 24 - 26**  
**THE SHERATON MILWAUKEE**  
**BROOKFIELD HOTEL**  
**375 S. MOORLAND ROAD**  
**BROOKFIELD, WI 53005**