



Topical Tidbits

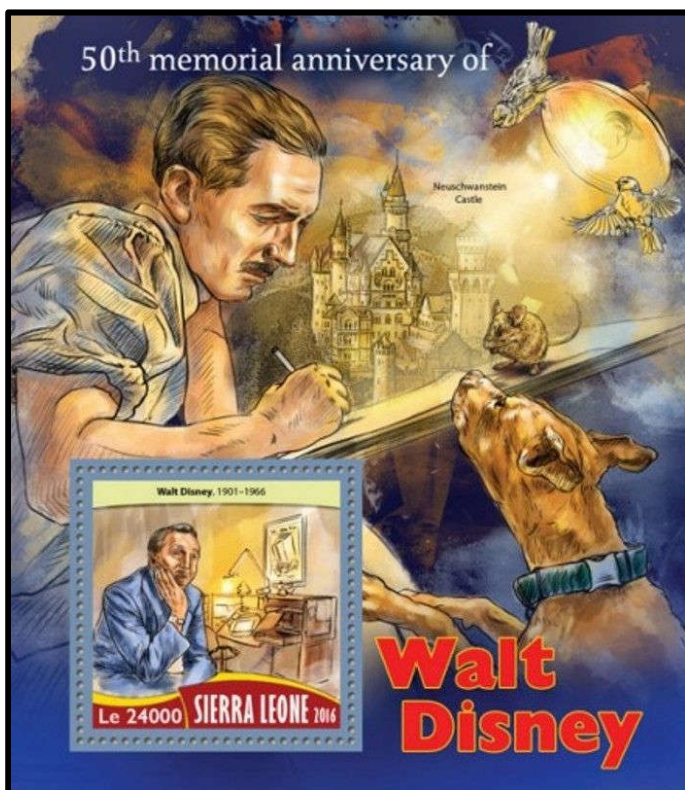
April – June 2017

Editor/Creator: Aimée Devine

Volume 6 Issue 2

The Magic of Disney

Greetings! This issue is all about Disney. When you're finished with these activities, you might like to check out the Disneyana on Stamps Society's website at <https://disnimation.wixsite.com/doss>. This ATA group is all about Disney and is open to people of all ages. The free membership entitles you to a Disney philately checklist, as well as their quarterly newsletter. Send them your address and a small complimentary packet of assorted Disney stamps will be mailed to you. Have fun!



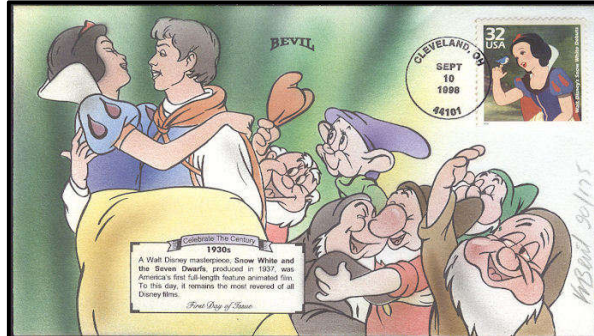
© The Perforated Press

Walt Disney Facts:

- Walt Disney was born in Chicago, Illinois, in 1901, but grew up in Marceline, Missouri, where he would sell his drawings to neighbors to make extra money.
- He had three older brothers and one younger sister.
- At 16, he tried to join the Army but was told he was too young. So, he signed up with the Red Cross and was sent to France where he drove an ambulance.
- Mickey Mouse, whose voice was done by Disney from 1928 until 1947, was originally named Mortimer Mouse.
- Disney's favorite song was "Feed the Birds" from *Mary Poppins*.
- Disney holds the record for the most individual Oscar wins (22) and nominations (59).
- Goofy was Disney's favorite character.

From Fairy Tale to Film

Many of Disney's movies are based on other stories. Read about three of them below. The German stamps pictured are *semi-postals*, which are also called *charity stamps*. These stamps are issued to raise money for a particular purpose, usually a charitable cause. They are sold at a premium over the postal value with the extra money going to the charity. They are usually easy to spot because they have the denomination followed by another number with a little plus sign in front of it.



The story of **Snow White** was originally published by the brothers Grimm in 1812 and is based on a German fairy tale. The seven dwarves didn't get names until 1912 when they appeared in a Broadway play. They were called *Blick, Flick, Glick, Snick, Plick, Whick, and Quee*. The 1937 Disney film renamed the dwarves.

Cinderella is a story that has been around for a very long time. A Chinese version appeared in 860. Charles Perrault first published it in France in 1697, and later it was included in *Grimms' Fairy Tales*. Disney's animated feature was released in 1950.

Sleeping Beauty, like *Cinderella*, was first published by Charles Perrault and then the brothers Grimm. The Disney film appeared in 1959.



The Seven Dwarves

Name the 7 dwarves using the first letter of each name for a clue.

- B _____
- D _____
- D _____
- G _____
- H _____
- S _____
- S _____



Answers: Bashful, Doc, Dopey, Grumpy, Happy, Sleepy, Sneezy
© The Perforated Press

Famous Couples

How many Disney couples do you know? Draw a line from the girl on the left and the boy in the right columns matching them to their correct stamp in the middle.



Disney Tune Trivia

See how well you know the songs from Disney movies. Write the correct letter (found in the lower right corner of each cover) beside each song title. Then, see if you can arrange these covers in the order each movie was made. Answers are at the bottom of the page.



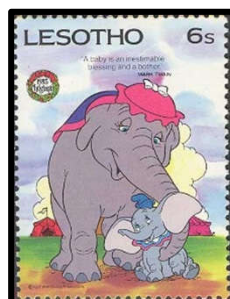
1. _____ "A Dream is a Wish Your Heart Makes"
2. _____ "The Unbirthday Song"
3. _____ "A Pirate's Life"
4. _____ "I Wan'na Be Like You"
5. _____ "Bella Notte"
6. _____ "Baby Mine"
7. _____ "I Just Can't Wait to Be King"
8. _____ "Cruella De Vil"
9. _____ "Oo-De-Lally"

My favorite Disney song is _____
from the movie _____.

Now, see if you can figure out which year each of the movies above were made. Write the letter next to the correct year.

© The Perforated Press

- | | | | |
|-------|------|-------|------|
| _____ | 1941 | _____ | 1955 |
| _____ | 1950 | _____ | 1961 |
| _____ | 1951 | _____ | 1967 |
| _____ | 1953 | _____ | 1973 |
| _____ | | _____ | 1994 |



Answers: Songs- 1. G, 2. C, 3. E, 4. H, 5. A, 6. B, 7. D, 8. I, 9. F Dates- 1941 Dumbo, 1950 Cinderella, 1951 Alice in Wonderland, 1953 Peter Pan, 1955 Lady and the Tramp, 1961 101 Dalmatians, 1967 Jungle Book, 1973 Robin Hood, 1994 Lion King

Disney Theme Parks

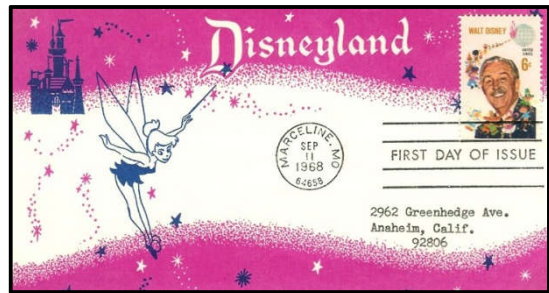
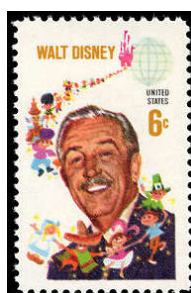
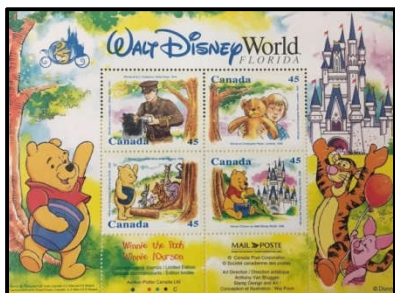
Read each sentence and circle the letter under the correct heading, either *Disneyland* or *Disney World*. Then write the circled letters in the boxes below according to the question number. If you got them all correct, you will have an inspirational quote from Walt Disney. The answer is at the bottom of the page.

		Disneyland	Disney World
1.	This park is located in Orlando, Florida.	S	I
2.	Sleeping Beauty's Castle is found here.	F	T
3.	This park buys the second highest amount of explosives in the United States. The only organization that purchases more is the U.S. Military.	A	Y
4.	This Disney property covers about 85 acres.	O	R
5.	Cinderella's Castle is located in this park.	B	U
6.	When this park first opened, adult admission cost \$3.50. Today, it's \$89.00.	V	C
7.	The first Disney park opened in 1955.	A	E
8.	This is the most visited theme park in the world in 2015.	M	N
9.	This park is located in Anaheim, California.	D	P
10.	Covering more than 27,000 acres, only about a third of this park is developed.	F	R
11.	Over 84 million Mickey Mouse ears have been sold at this park since it opened.	E	L
12.	Over 200 pairs of sunglasses are turned into the lost and found here each day.	V	M
13.	Opened in 1971, it was the second Disney park.	U	T



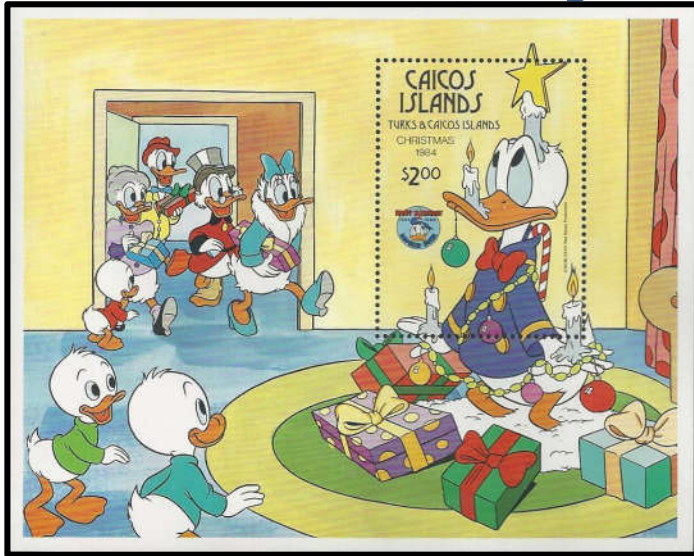
©The Perforated Press

1	2		3	4	5		6	7	8		9	10	11	7	12
1	13		3	4	5		6	7	8		9	4		1	13



Answer:
If you can
dream it, you
can do it.

Disney Fun Page



How Many???

- I spy _____ hats.
- I spy _____ bows.
- I spy _____ ducks.
- I spy _____ candles.
- I spy _____ presents.
- I spy _____ ornaments.

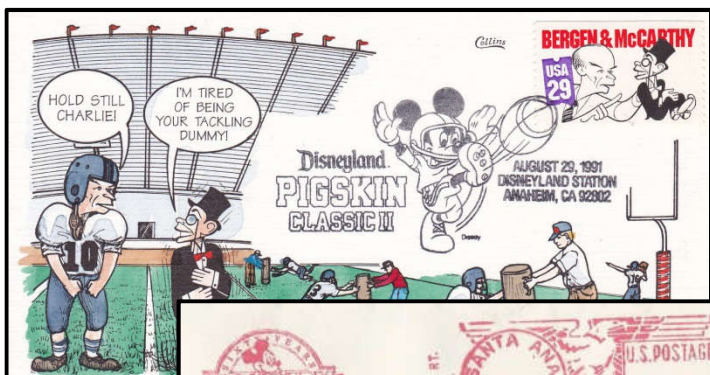
Word Search

Did you know that Donald Duck was a stamp collector? This stamp from Dominica shows him using some of the tools of the hobby. See how many you can find below.



- album
- hinges
- glassines
- stock book
- tongs
- magnifier
- perf gauge
- watermark tray

G O O A B L N S F R E L G I
 L K M S E G N I H B R S M W
 A L P E R F G A U G E G U A
 S P K F G W R B F I K N B E
 S T O C K B O O K F N O L S
 I Y A R T K R A M R E T A W
 N S O T S M K E A B S I K B
 E E W R E I F I N G A M S D
 S U T W A T G E F L N W A G



Disney Cancels

Another fun way to collect Disney is to look for cancels. The complete cover (left) shows an event cancel and the two smaller pictures (below) are meter cancels.





Disney